

EN-WL5

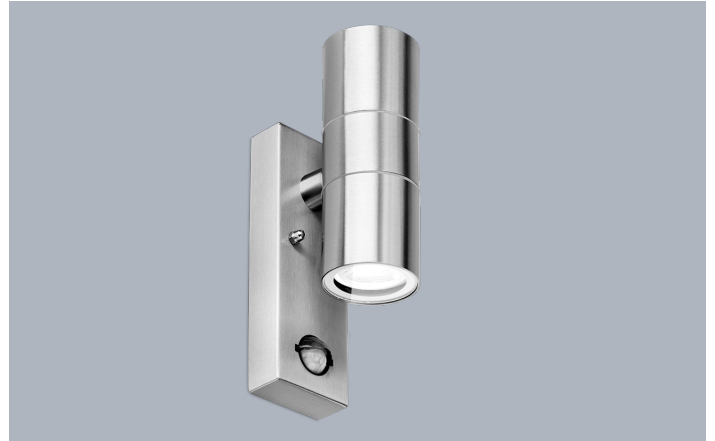
Project.....
Fixture Type.....

Comments.....
Prepared By.....

Product Description:

The PIR sensor wall light makes it ideal for accent lighting focusing on areas or features you want to light up, only at times when motion is detected up to 8m within it's 120° detection range. Fitted with a GU10 lamp holder to allow you to select the correct lamp for the application. Available in white, black or stainless steel finish. Not suitable for coastal application.

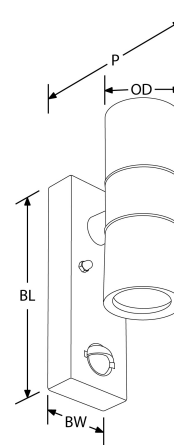
Product Image:



Product Feature:

- 304 stainless steel or aluminium
- IP44 rated
- PIR sensor 120° detection beam range up to 8m
- Adjustable hold time 10 seconds to 4 minutes
- Screw on cover for easy lamp change
- For use with GU10 lamps - lamp not included
- 3 year warranty

Product Dimension:



Compliance & Approvals:



Product Specs:

Input Voltage	220~240V
Dimmable	No
Dimensions	220mm (L) x mm (W) x mm (H) x 60mm (OD) x mm (RD) x 96mm

SKU Table and Ordering

SKU Code	Lumens/Watt	Product Type
EN-WL5BLK	0	PIR
EN-WL5SS	0	PIR
EN-WL5W	0	PIR

Warranty

This product has a warranty period of 3 Years.

Warranties are valid from the date of purchase. The warranty is invalid in the case of improper use, installation, tampering, removal of the Q.C. date label or installation in an improper working environment or installation. Should this product fail during the warranty period it will be replaced free of charge, subject to the correct installation of the original product and subsequent return of the faulty unit. Aurora does not accept responsibility for any installation costs associated with the replacement of this product and Aurora reserves the right to alter specifications without prior notice.

ZA Sales & Distribution

Building 6 Pinewood

Office Park 33 Riley

Road, Woodmead Gauteng

South Africa

Tel : +27 (0) 11 234 4878