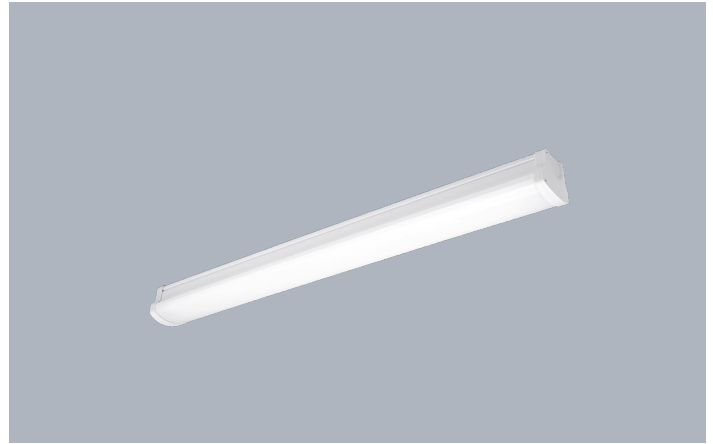


Product Description:

The UniPac™ range of anti-corrosives is the perfect cost effective solution to replace traditional T8 fluorescent fittings. Formed from a single polycarbonate body and using high lumen LED chips, it's engineered for installation in the most challenging environments making the decision to switch to LED that much easier. Also available with microwave sensor and corridor function.

Product Image:

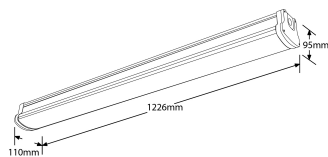


UniPac™ 1200mm 36W IP65 Polycarbonate LED Anti-Corrosive

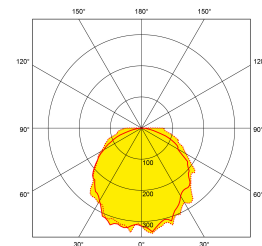
Product Features:

- IP65 vandal resistant polycarbonate housing and opal diffuser provide smooth, even light distribution with no hot spots
- Ideal for both interior and exterior applications e.g. car parks
- Push fit terminals in both ends for through cable wiring and quick and easy installation
- 20mm conduit entry knockouts on each end cap
- Supplied with mounting clips and cable glands
- Microwave sensor detection range up to 12 metres
- Light detection at 30 lux unless disabled
- Adjustable hold time 5 seconds to 10 minutes
- IK08 impact rating
- 1.5kV surge protection
- 3 year warranty

Line Drawing Image



Polar Curve Image



Product Specs:

| | | | |
|-------------------------------|-------------|-------------------------------|---------|
| Technology | LED | Number of LEDs | 176 |
| Luminaire Distribution | Direct | Lifetime L70 (hrs) | 25000 |
| Input Voltage | 100~240V AC | Input Frequency | 50/60HZ |
| Dimmable | No | IP Rating | IP65 |
| IK Rating | IK08 | Operating Env. Temp. (Min) °C | -20 |
| Operating Env. Temp. (Max) °C | 40 | Optic Material | PC |
| Power Factor | 0.9 | Lamp Base | Other |
| Height (mm) | 95 | Length (mm) | 1226 |
| Width (mm) | 110 | Surge Protection (kV) | 1.5 |
| SDCM | 6 | | |

SKU Table and Ordering

| SKU Code | Wattage | Lumens | Lumens/Watt | Colour | Beam Angle | Ra | SDCM |
|-----------------|---------|--------|-------------|--------|------------|----|------|
| EN-ANTE236/40 | 36 | 3200 | 89 | 4000 | 120 | 80 | 6 |
| EN-ANTE236/40EM | 36 | 3200 | 89 | 4000 | 120 | 80 | 6 |
| EN-ANTE236/40MS | 36 | 3200 | 89 | 4000 | 120 | 80 | 6 |

Compliance & Approvals:



Warranty

This product has a warranty period of 3 Years. Warranties are valid from the date of purchase. The warranty is invalid in the case of improper use, installation, tampering, removal of the Q.C. date label or installation in an improper working environment or installation. Should this product fail during the warranty period it will be replaced free of charge, subject to the correct installation of the original product and subsequent return of the faulty unit. Aurora does not accept responsibility for any installation costs associated with the replacement of this product and Aurora reserves the right to alter specifications without prior notice.

UK Enlite Sales & Distribution
Apex Park
6 Little Burrow
Welwyn Garden City AL7 4SW
United Kingdom
Tel : +44 (0) 1707 35 18 20