

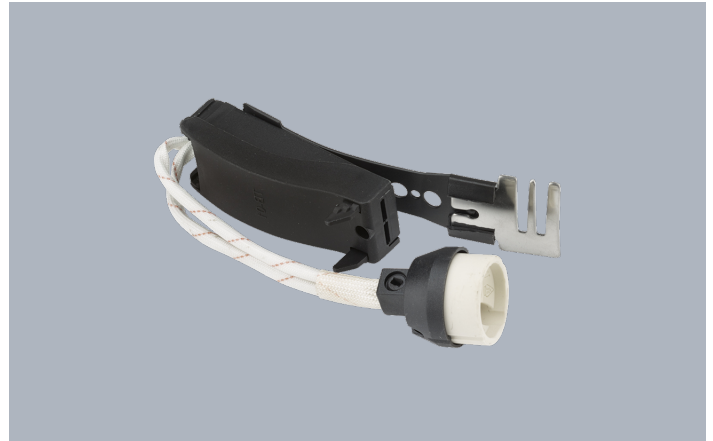
LUMINAIRES ACCESSORIES - DOWNLIGHT ACCESSORIES

DA-900E

Product Description:

Ready-to-use socket kit. Ideal for replacement and retrofitting of existing luminaires.

Product Image:



Product Specs:

Input Voltage	240~240V	Dimmable	No
Lamp Base	GU10	Length (Inches)	8.65

SKU Table and Ordering:

SKU Code	Lumens/Watt
DA-900E	0

Compliance & Approvals:



Warranty:

This product has a warranty period of . Warranties may be available on certain products as indicated in the product description. Warranties are valid from the date of purchase. The warranty is invalid in the case of improper use, installation, tampering, removal of the Q.C. date label or installation in an improper working environment or installation. Should this product fail during the warranty period it will be replaced free of charge, subject to the correct installation of the original product and subsequent return of the faulty unit. Aurora does not accept responsibility for any installation costs associated with the replacement of this product and Aurora reserves the right to alter specifications without prior notice.

USA Sales & Distribution

12035 34th Street North
Suite 2
St Petersburg, Florida 33716
USA
Tel : +1 (727) 524 4270