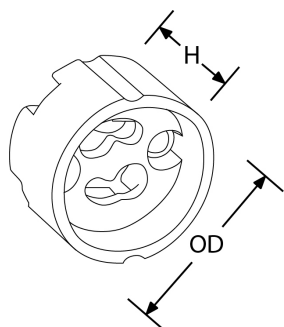


**Product Description:** Ceramic GU10 lampholder

Ceramic lampholder for integration. Ideal for replacement and retrofitting of existing luminaires.

SKU Code	Finish Colour
DA-820	White

Line Drawing	Polar Curve	Colour
--------------	-------------	--------



## Feature & Benefits

- Suitable for lamp base GU10 & GZ10
- Teflon cable 300/500V 180°C
- Mounting screw M4
- VDE Certification
- Supplied with 15cm cable 2 x (1 x 0.75mm<sup>2</sup>)

## Product Specs:

Input Voltage	240~240V	Dimmable	No
Lamp Base	GU10	Weight (Kg)	0.016
Positional Adjustment	Fixed		

## Compliance & Approvals:



## Warranty:

This product has a warranty period of 1 Year. Warranties may be available on certain products as indicated in the product description. Warranties are valid from the date of purchase. The warranty is invalid in the case of improper use, installation, tampering, removal of the Q.C. date label or installation in an improper working environment or installation. Should this product fail during the warranty period it will be replaced free of charge, subject to the correct installation of the original product and subsequent return of the faulty unit. Aurora does not accept responsibility for any installation costs associated with the replacement of this product and Aurora reserves the right to alter specifications without prior notice.