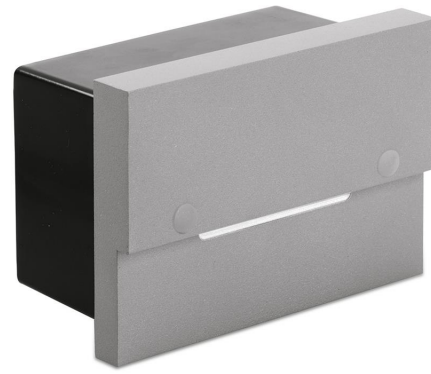


Product Description:

Product Image:



6W IP66 Wall Light

Product Features:

- IP66 mains voltage aluminium recessed LED wall light
- Suitable for wall or staircase mounting
- 6W linear LED light engine
- Recessed mounting box included
- Integrated LED driver - no separate driver required
- Powder coated satin silver corrosion resistant finish
- Non-dimmable

Product Specs:

Technology	LED	Input Voltage	220~240V AC
LED Chip	COB	Number of LEDs	1
Lifetime L70 (hrs)	30000	Dimmable	No
Length (mm)	121	Cutout Length (mm)	112
Cutout Width (mm)	75	Recess Depth (mm)	45
Weight (Kg)	0.523		

SKU Table and Ordering:

SKU Code	Wattage	Colour	Lumens	Lumens/Watt	Finish Colour
AU-STL592BLK	6	4000	60	10	Black
AU-STL592SS	6	4000	60	10	Satin Silver

Compliance & Approvals:



Warranty:

This product has a warranty period of 1 Year. Warranties may be available on certain products as indicated in the product description. Warranties are valid from the date of purchase. The warranty is invalid in the case of improper use, installation, tampering, removal of the Q.C. date label or installation in an improper working environment or installation. Should this product fail during the warranty period it will be replaced free of charge, subject to the correct installation of the original product and subsequent return of the faulty unit. Aurora does not accept responsibility for any installation costs associated with the replacement of this product and Aurora reserves the right to alter specifications without prior notice.